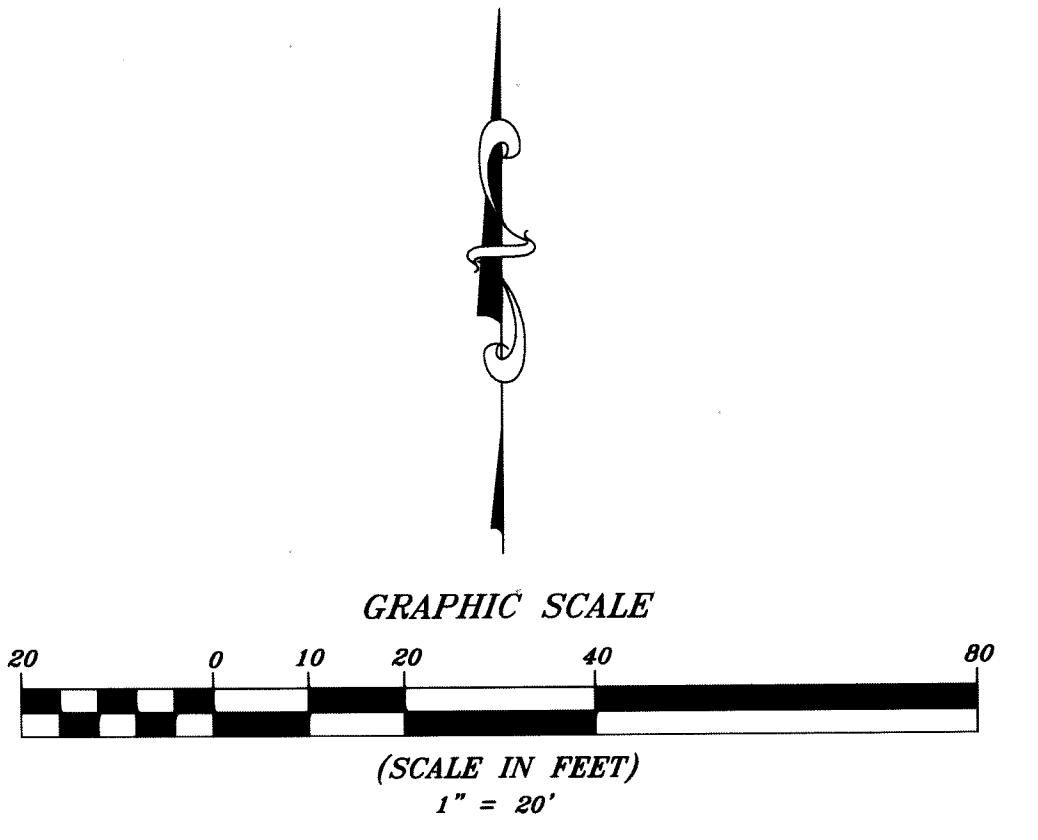


169

STATE OF FLORIDA }
 COUNTY OF PALM BEACH } S.S.
 THIS INSTRUMENT WAS FILED FOR
 RECORD AT _____
 THIS ____ DAY OF _____
 2017 ____ AND DULY RECORDED
 IN PLAT BOOK NO. _____
 ON PAGE _____
 SHARON R. BOCK,
 CLERK AND COMPTROLLER
 BY: _____ D.C.

MANGONE AND SPIRK SELF-STORAGE M.U.P.D. - PLAT TWO

LYING IN SECTION 1, TOWNSHIP 45 SOUTH, RANGE 42 EAST,
 PALM BEACH COUNTY, FLORIDA,
 SHEET 2 OF 2



LEGEND

- F.D.O.T. FLORIDA DEPARTMENT OF TRANSPORTATION
- LAE LIMITED ACCESS EASEMENT
- ORB OFFICIAL RECORD BOOK
- PG PAGE
- R/W RIGHT-OF-WAY

THIS INSTRUMENT PREPARED BY C. ANDRE RAYMAN, P.S.M. IN THE OFFICES OF
 ENGENUITY GROUP, INC., ENGINEERS SURVEYORS AND GIS MAPPERS,
 1280 N. CONGRESS AVE, SUITE 101, WEST PALM BEACH, FLORIDA 33409.
 CERTIFICATE OF AUTHORIZATION NO. LB0006603

MANGONE AND SPIRK SELF-STORAGE M.U.P.D. - PLAT TWO

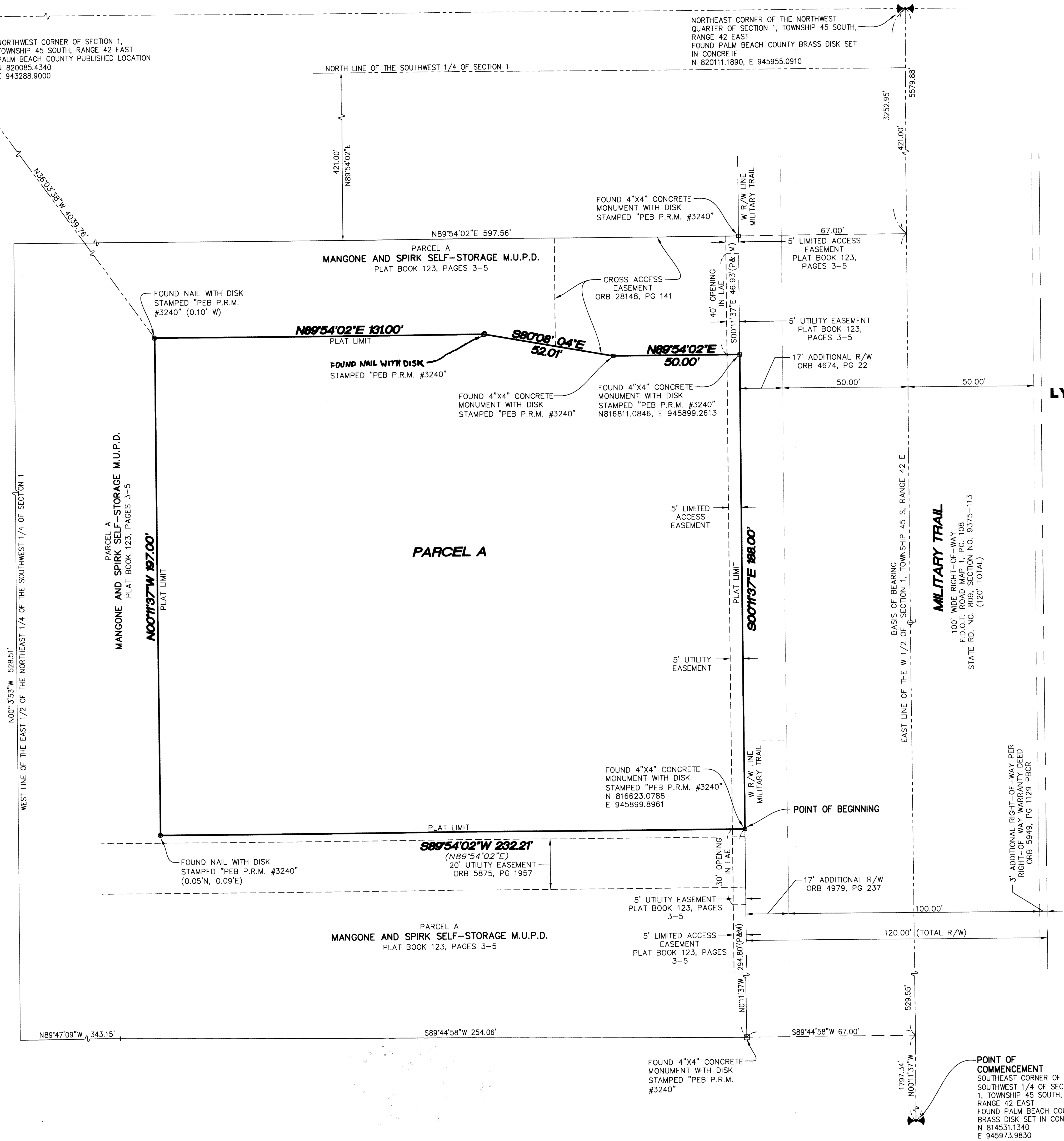
DATE	11/17/2016
SCALE	1" = 20'
CAD FILE	16103.01rp01.dwg
SSSK PROJECT	16103.01
DRAWN	KB
CHECKED	K. BECK

SH E N E O T
2/2
 JOB NO.
16103.01

A Higher Standard of Excellence

 ENGINEERS • SURVEYORS • GIS MAPPERS
 1280 N. CONGRESS AVENUE, SUITE 101,
 WEST PALM BEACH, FLORIDA 33409
 PH (561)655-1151 • FAX (561)832-9390
 WWW.ENGENUITYGROUP.COM

POINT OF COMMENCEMENT
 SOUTHEAST CORNER OF
 SOUTHWEST 1/4 OF SECTION
 1, TOWNSHIP 45 SOUTH,
 RANGE 42 EAST
 FOUND PALM BEACH COUNTY
 BRASS DISK SET IN CONCRETE
 N 814531.1340
 E 945973.9830



Y:\Land Projects R2\16103.01 adventure mini.gor\Draw\16103.01rp01 with changes.dwg 9/12/2017 4:22:29 PM EDT